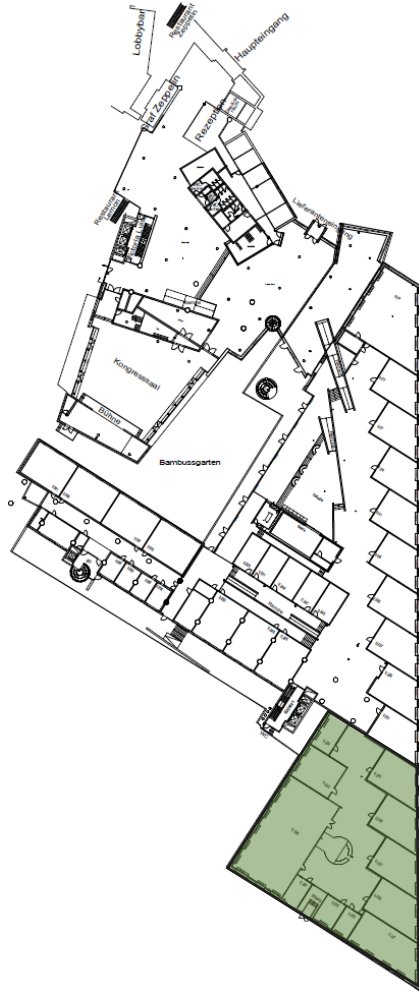


Expo Concept S

The illustrations on the following pages are schematic only, not to scale, and are intended solely as a non-binding proposal of generally available net exhibition space.

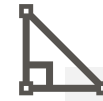


Expo Concept S Outline



ROOMS

- Conference Room 0.226
- Conference Room 0.241
- 5 x Standard Conference Room (0.222, 0.233, 0.235, 0.237, 0.239)
- 3 x Workshop Room (0.220, 0.236, 0.238)



EXHIBITION SPACE

- 55 sq. m excl. 0.235 + 0.237
- 217 sq. m incl. 0.235 + 0.237



RENTAL RATES

- Exhibition space: EUR 2,000.00 (100% waiver on the setup day)
- Room hires: EUR 6,000.00
- Total: EUR 8,000.00



ADD-ONS

- Bus parking space

Expo Concept S | Shedhalle

Area measurement (sq. m) for each surface

- | | | | |
|---|---|---|---|
| 1 | 10 sq. m (4.00m x 2.00m) | 5 | 82 sq. m (L/W): 12.94m x 9.38m / 7.90m x 7.87m) |
| 2 | 10 sq. m (4.00m x 2.00m) | 6 | 15 sq. m (5.00m x 3.00m) |
| 3 | 80 sq. m (L/W): 12.66m x 9.40m / 7.61m x 7.87m) | 7 | 5 sq. m (2.00m x 2.50m) |
| 4 | 10 sq. m (5.00m x 2.00m) | 8 | 5 sq. m (2.00m x 2.50m) |

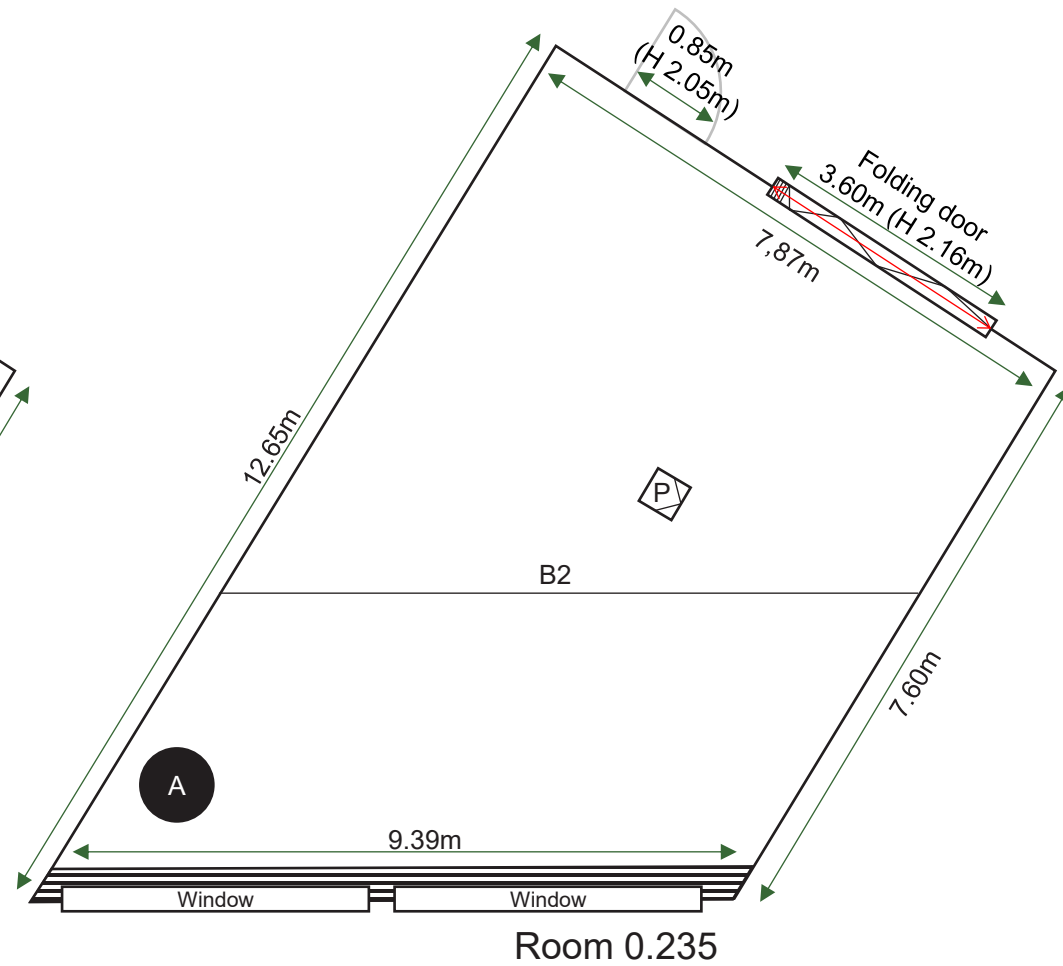
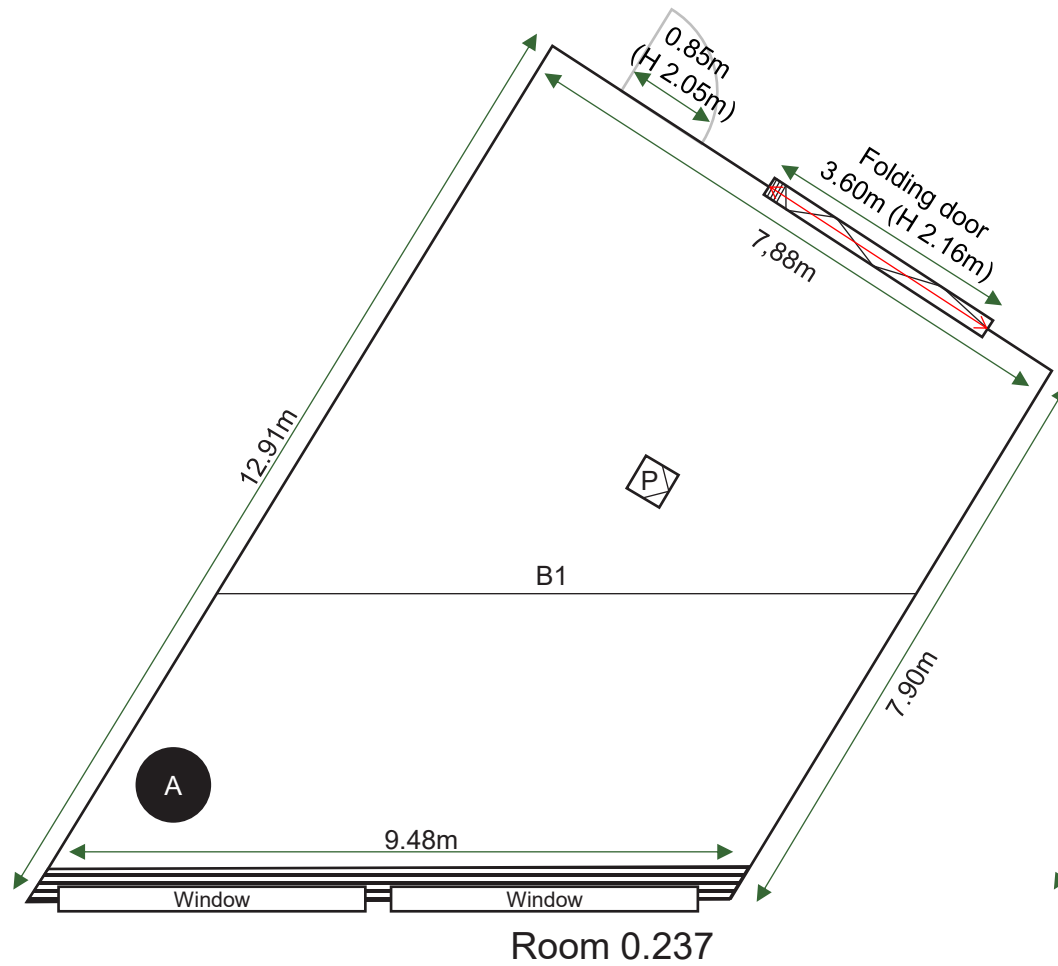
Exhibition area including use no. 3 and no. 5 $\hat{=}$ 217 sq. m

Exhibition area excluding use no. 3 and no. 5 $\hat{=}$ 55 sq. m

Ceiling height: 3-6 meter



Expo Concept S | Zoom 0.237 and 0.235

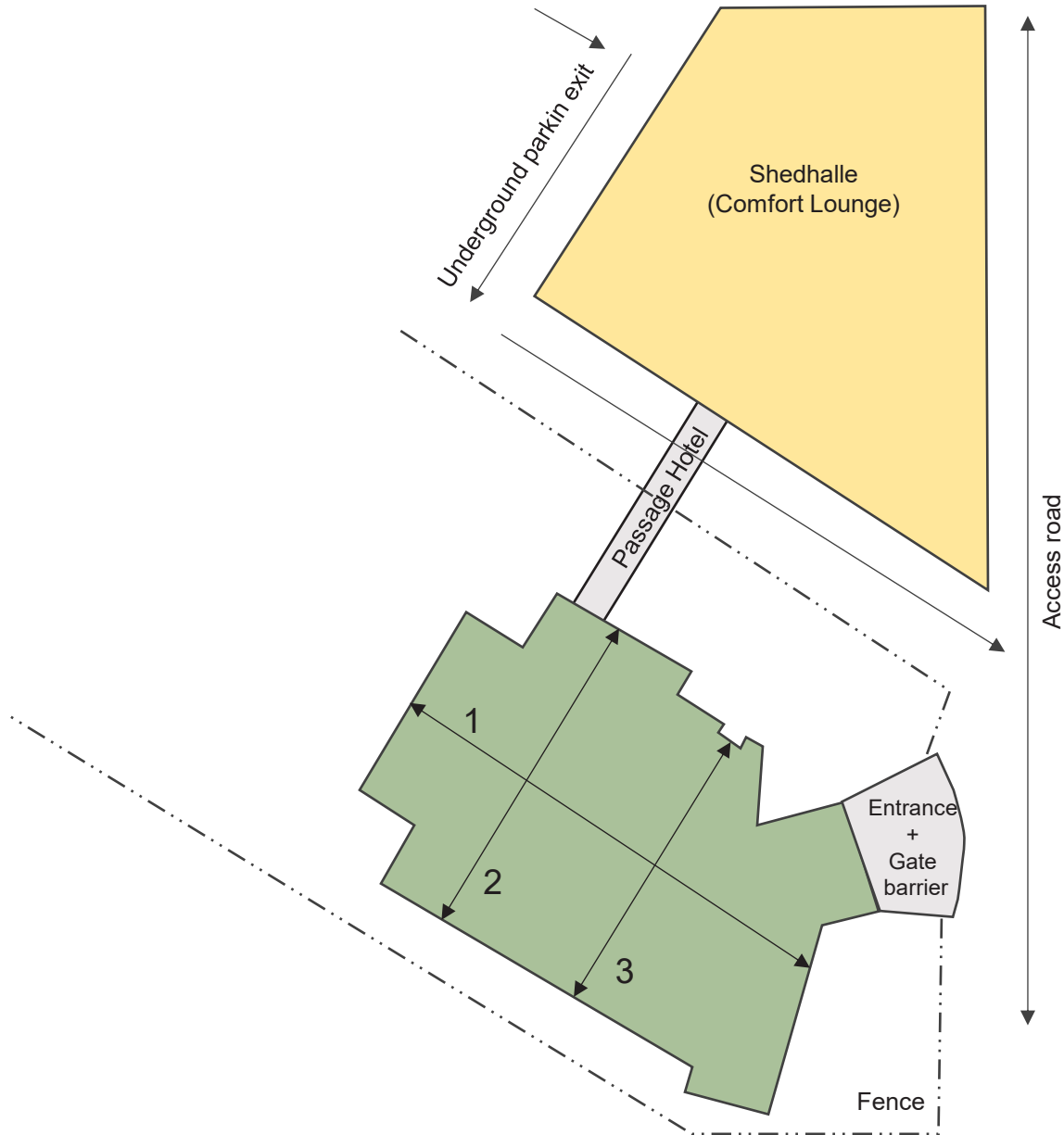


Legend: B1 = Beam, height 3.10m P = Projector, height 2.47m
B2 = Beam, height 3.22m A = Air ventilation column

Expo Concept S | Bus parking space

Specification

35.79m	1
25.48m	2
22.54m	3



Legend:

- Exhibitor
- Booked rooms

- Window
- F&B
- Third-party events

- Hotel storage rooms
- Room emergency exit
- Column within exhibitor area

- Emergency exit
- Stairs
- Ramp

Expo Concept S | Overview



	Room	sq. m	Costs per day		max. seating capacities				
			Unit price in EUR	Subtotal in EUR	Classroom	Theatre	U-Shape	Boardroom	Circle
Expo S	Package price room hire 0.226, 0.241, 0.239, 0.237, 0.235, 0.233, 0.222, 0.220, 0.238, 0.236	1,002 305 107 410 90	6,000.00	6,000.00	160 55 30 /	230 80 45 /	56 40 20 to 10	60 40 25 to 12	/ 40 30 to 12
	Exhibition space without 0.235, 0.237 or with 0.235, 0.237	55 to 217	2,000.00	2,000.00					
Add-Ons	Bus parking space	/	600.00 (plus power, etc.)	600.00					
Total rent: (without Add-Ons)		1,969 to 2,131		<u>8,000.00*</u>					

*plus a minimum F&B spend of EUR 6,750.00 per day (150 participants per day; equivalent to a guaranteed spend of EUR 45.00 per person), as well as a minimum reservation of 90 rooms per night (60% of 150 rooms).

Expo Concept | Contact



Convention Sales Team

veranstaltung@kongresshotel-potsdam.de
+49 331 907 7555

Am Luftschiffhafen 1
14471 Potsdam
Germany
www.kongresshotel-potsdam.de