

Expo Concept XL

The illustrations on the following pages are schematic only, not to scale, and are intended solely as a non-binding proposal of generally available net exhibition space.



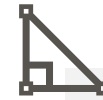
Expo Concept XL

Outline



ROOMS

- Congress Hall
- Foyer
- Conference Room 0.226
- Conference Room 0.214
- Conference Room 0.241
- 11 x Standard Conference Room (0.215, 0.217, 0.219, 0.221, 0.223, 0.225, 0.227, 0.233, 0.235, 0.237, 0.239)
- 1 x Workshop Room (0.220)



EXHIBITION SPACE

- 413 sq. m excl. 0.235 + 0.237
- 575 sq. m incl. 0.235 + 0.237
- Additional capacity can be created by converting conference rooms into a hospitality suite for exhibitors.



RENTAL RATES

- Exhibition space: EUR 15,000.00 (50% waiver on the setup day)
- Room hires: EUR 14,240.00
- Total: EUR 29,240.00

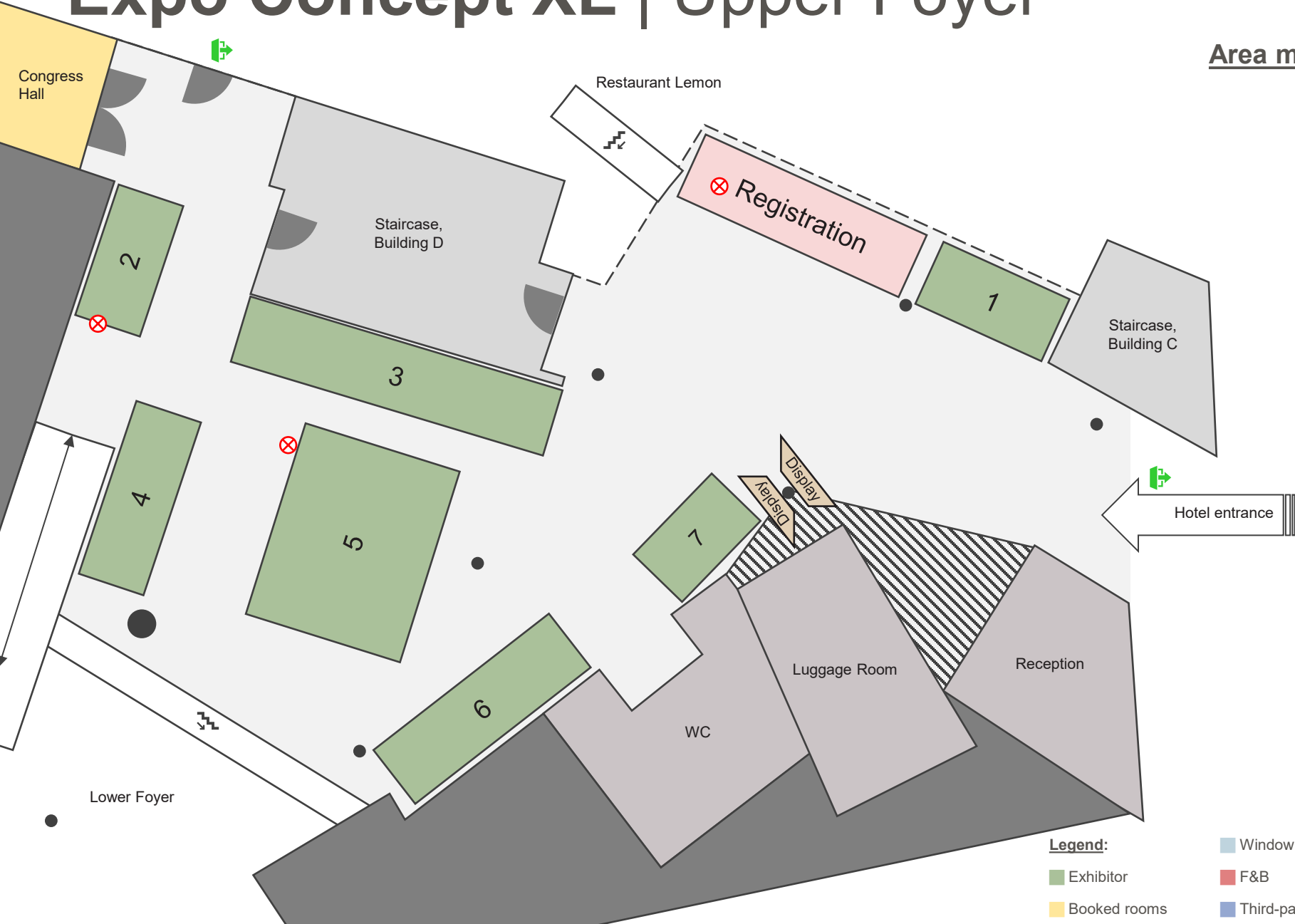


ADD-ONS

- Forecourt
- Bamboo Garden
- Bus parking space

The meeting rooms 0.222 (emergency exit), 0.229 and 0.231 (both used as hotel storage areas) are excluded from the rental.

Expo Concept XL | Upper Foyer



Area measurement (sq. m) for each surface

5 sq. m (2.50m x 2.00m)	1
7 sq. m (4.00m x 2.00m)	2
21 sq. m (10.50m x 2.00m)	3
11 sq. m (5.50m x 2.00m)	4
20 sq. m (10.00m x 2.00m)	5
14 sq. m (7.00m x 2.00m)	6
6 sq. m (3.00m x 2.00m)	7

Exhibition area \cong 84 sq. m

Ceiling height

Height to lamp 2.32m
Height to ceiling 3.21m

Legend:

Exhibitor
Booked rooms

Window

F&B

Third-party events

Hotel storage rooms

Room emergency exit

Column within exhibitor area

Emergency exit

Stairs

Ramp

Expo Concept XL | Shedhalle

Area measurement (sq. m) for each surface

20	7 sq. m (3.50m x 2.00m)	25	15 sq. m (5.00m x 3.00m)	30	10 sq. m (4.00m x 2.00m)
21	6 sq. m (3.00m x 2.00m)	26	15 sq. m (5.00m x 3.00m)	31	80 sq. m (L/W: 12.66m x 9.40m / 7.61m x 7.87m)
22	16 sq. m (4.00m x 4.00m)	27	15 sq. m (5.00m x 3.00m)	32	10 sq. m (5.00m x 2.00m)
23	18 sq. m (9.00m x 2.00m)	28	28 sq. m (7.00m x 4.00m)	33	82 sq. m (L/W: 12.94m x 9.38m / 7.90m x 7.87m)
24	15 sq. m (5.00m x 4.00m)	29	10 sq. m (4.00m x 2.00m)	34	15 sq. m (5.00m x 3.00m)

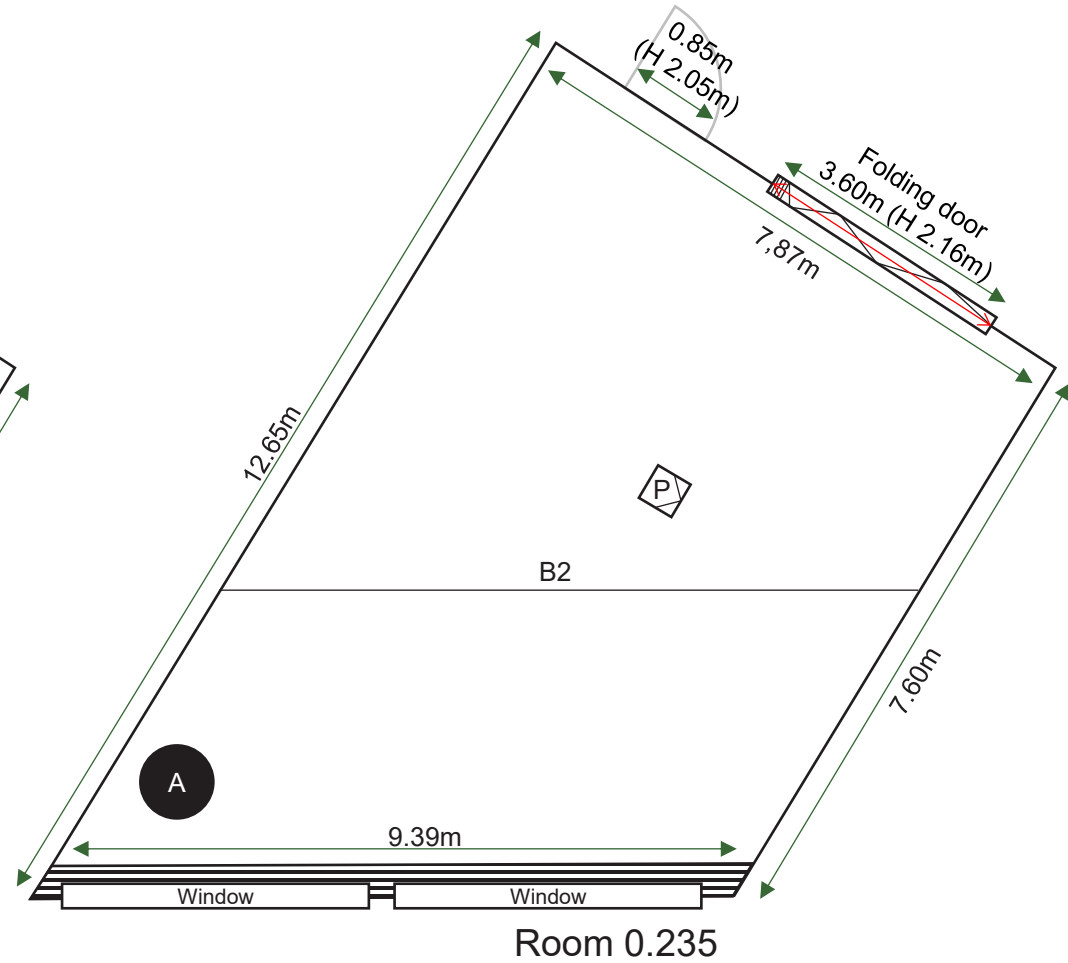
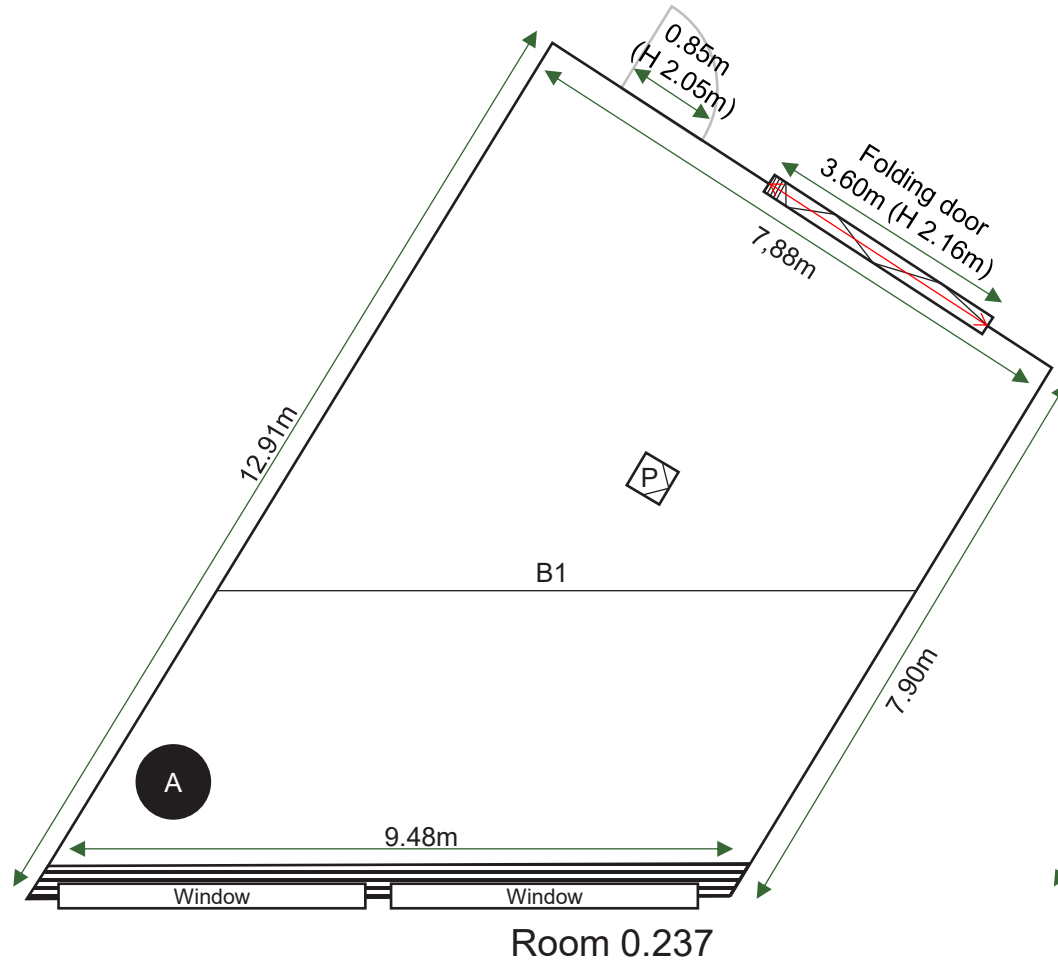
Exhibition area including use no. 31 and no. 33 $\hat{=}$ 342 sq. m

Exhibition area excluding use no. 31 and no. 33 $\hat{=}$ 180 sq. m

Ceiling height: 3-6 meter



Expo Concept XL | Zoom 0.237 and 0.235



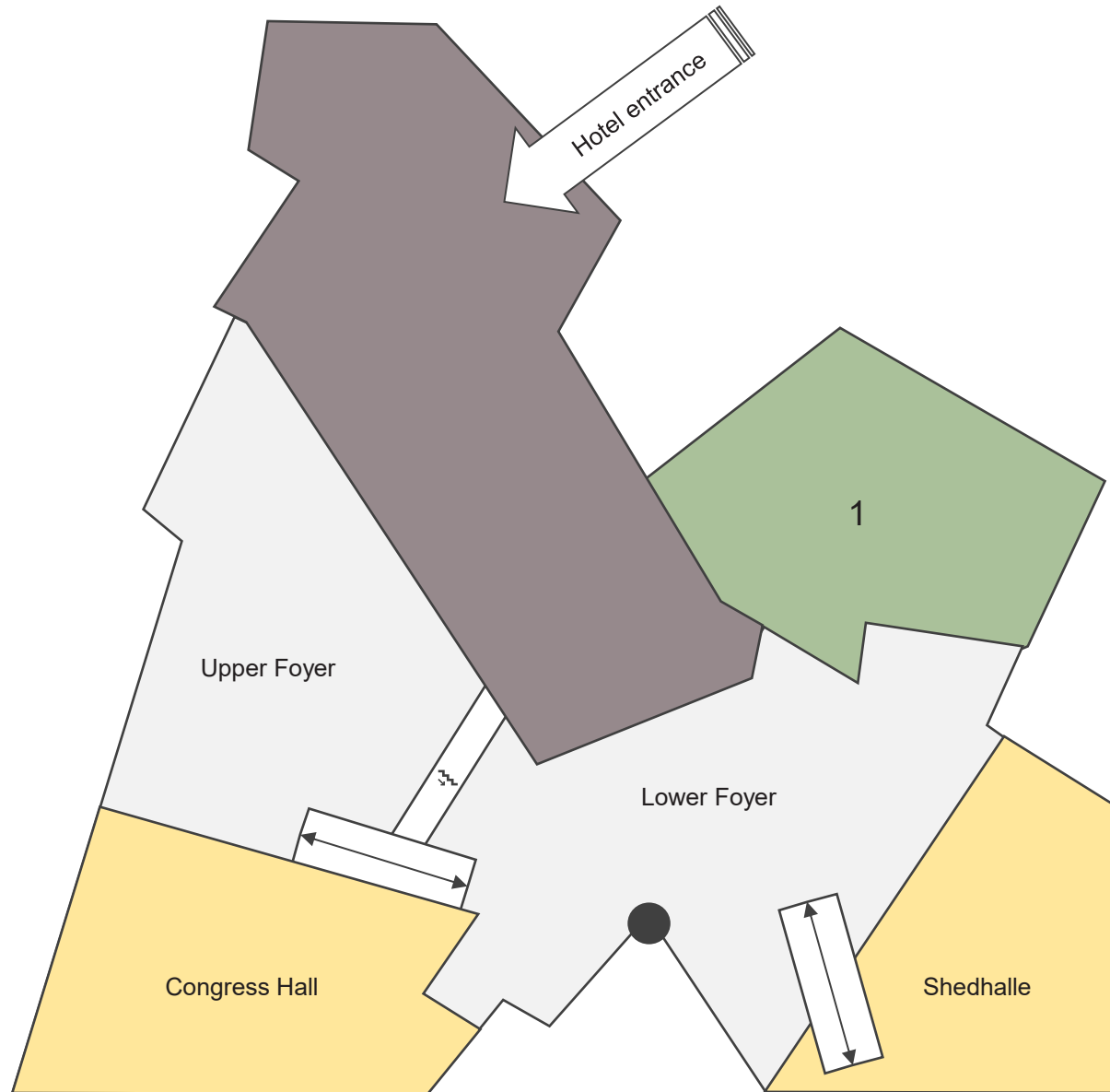
Legend: B1 = Beam, height 3.10m P = Projector, height 2.47m
B2 = Beam, height 3.22m A = Air ventilation column

Expo Concept XL | Forecourt

Specification

Up to 16 tonnes,
 maximum length 10.00 m,
 maximum height 3.85–3.95 m
 depending on vehicle length

1



Legend:

- Exhibitor
- Booked rooms

- Window
- F&B
- Third-party events

- Hotel storage rooms
- Room emergency exit
- ⊗ Column within exhibitor area

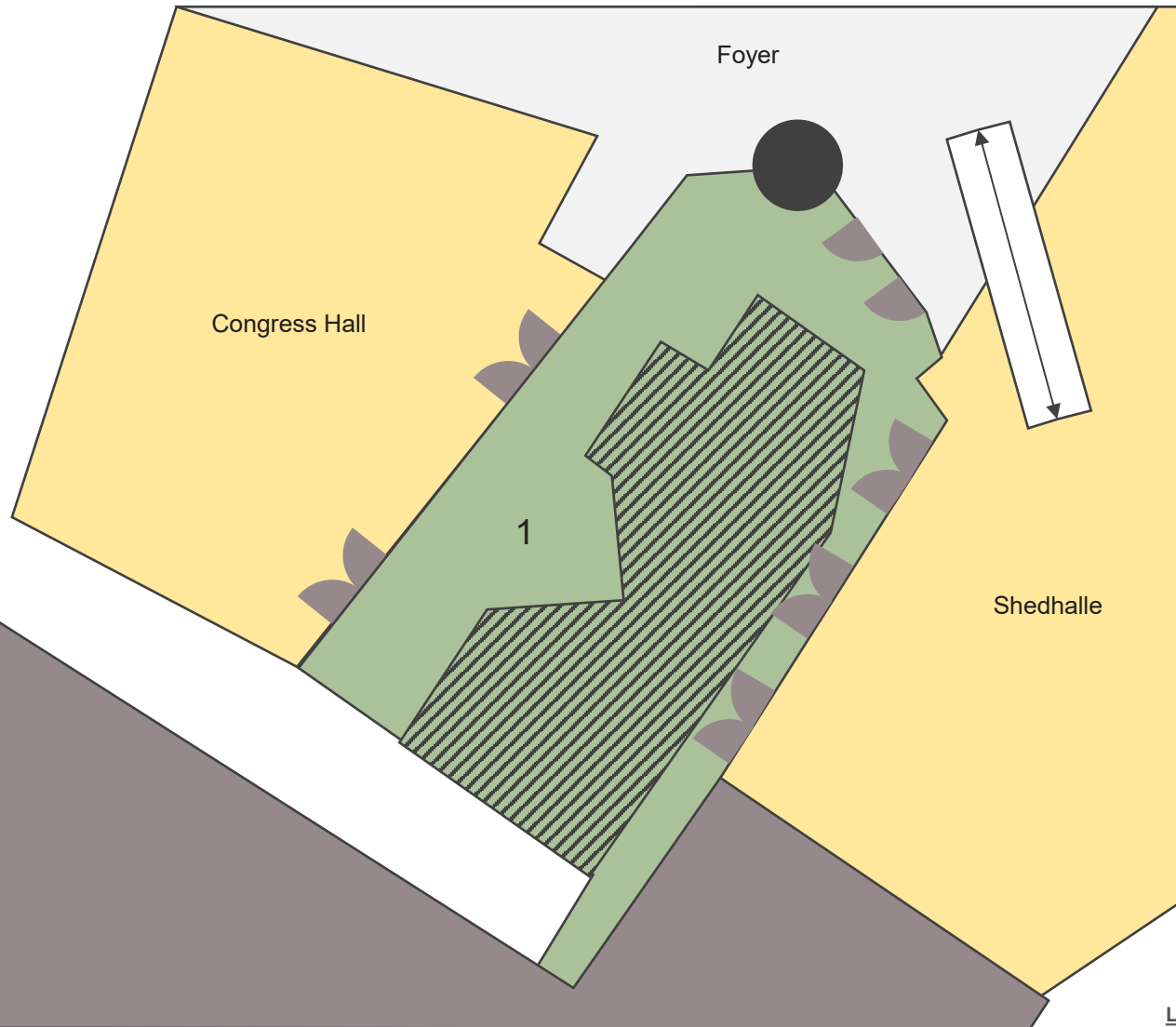
- ➡ Emergency exit
- ↕ Stairs
- ↔ Ramp

Expo Concept XL | Bamboo Garden

Specification

Outdoor area with terrace,
not accessible by vehicles

1



Legend:

- Exhibitor
- Booked rooms

- Window
- F&B
- Third-party events

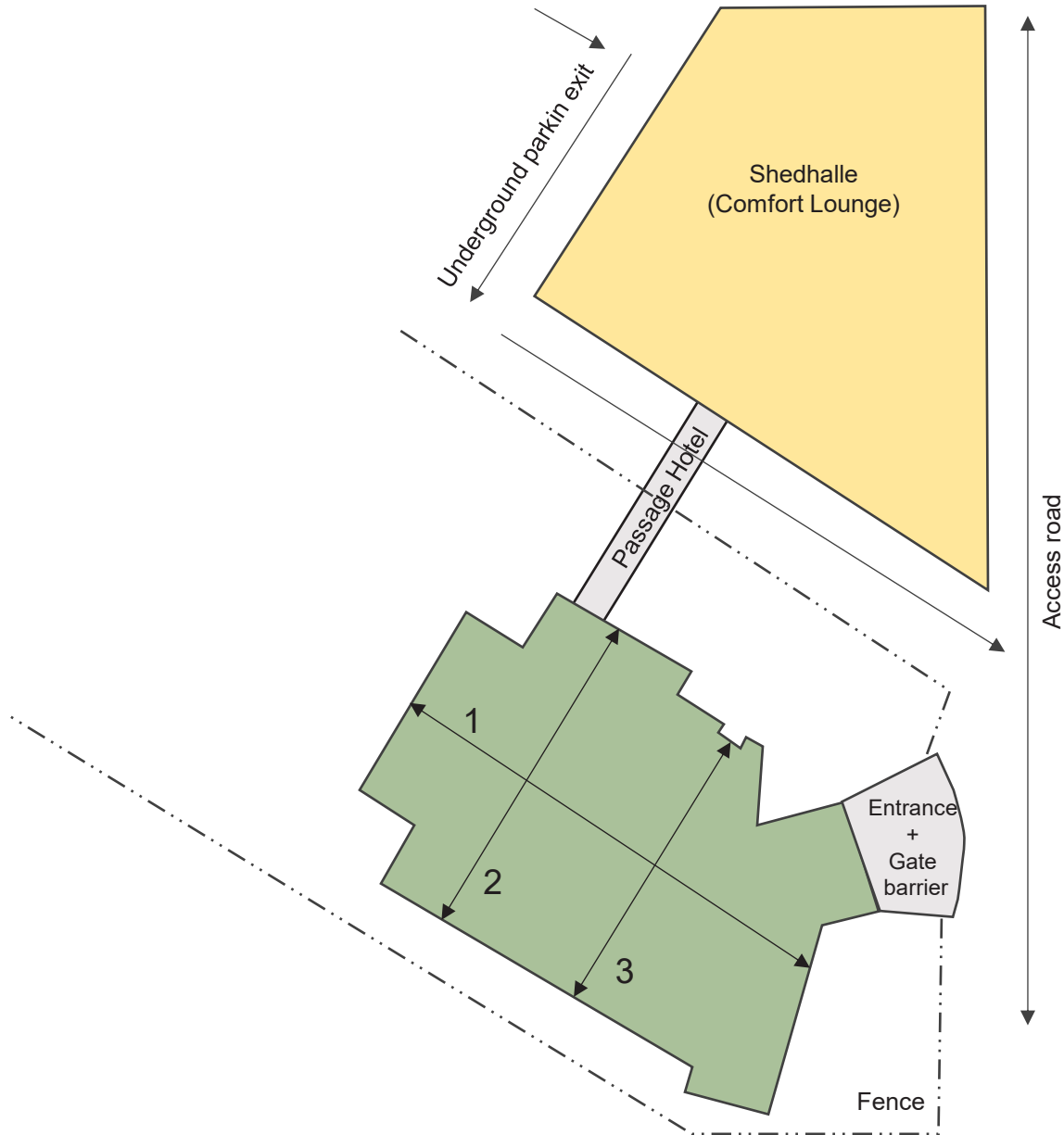
- Hotel storage rooms
- Room emergency exit
- Column within exhibitor area

- Emergency exit
- Stairs
- Ramp

Expo Concept XL | Bus parking space

Specification

35.79m	1
25.48m	2
22.54m	3



Legend:

- Exhibitor
- Booked rooms

- Window
- F&B
- Third-party events

- Hotel storage rooms
- Room emergency exit
- ⊗ Column within exhibitor area

- ➡ Emergency exit
- ⚡ Stairs
- ↔ Ramp

Expo Concept XL | Overview



	Room	sq. m	Costs per day		max. seating capacities				
			Unit price in EUR	Subtotal in EUR	Classroom	Theatre	U-Shape	Boardroom	Circle
Messe XL	Congress Hall	472	3,800.00	3,800.00	220	500	60	80	/
	Conference Room 0.226	305	2,300.00	2,300.00	160	238	56	76	/
	Conference Room 0.214	219	1,500.00	1,500.00	90	150	40	52	/
	Conference Room 0.241	107	900.00	900.00	55	80	30	40	40
	11 x Standard Conference Room (without 0.222, 0.229, 0.231)	884	490.00	5,390.00	25-30	45-50	20	25	30
	1 x Workshop Room 0.220	38	350.00	350.00	12	20	12	16	16
	Exhibition space without 0.235, 0.237 or with 0.235, 0.237	413 to 575	15,000.00	15,000.00			/		
Add-Ons	Forecourt	/	0.00 (plus power, etc.)	tba			/		
	Bamboo Garden	/	0.00 (plus power, etc.)	tba			/		
	Bus parking space	/	1.000,00 EUR (plus power, etc.)	tba			/		
Total rent: (without Add-Ons)		2.438 to 2.600		<u>29,240.00</u> *					

*plus a minimum F&B spend of EUR 13,500.00 per day (300 participants per day; equivalent to a guaranteed spend of EUR 45.00 per person), as well as a minimum reservation of 180 rooms per night (60% of 250 rooms).

Financial year 2026 and 2027

The stated prices are gross prices (VAT as of 01/2026).

Expo Concept | Contact



Convention Sales Team

veranstaltung@kongresshotel-potsdam.de
+49 331 907 7555

Am Luftschiffhafen 1
14471 Potsdam
www.kongresshotel-potsdam.de